

表面実装用ピン

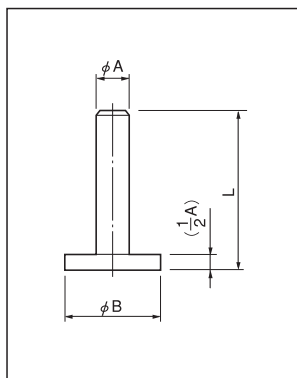
DH, DHS シリーズ (1パック 1000 本入)

RoHS対応

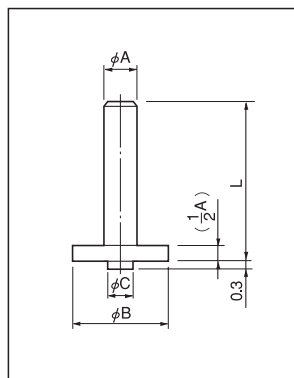
- 表面実装用基板に立てられるピンです。
- DHS シリーズは位置決めが出来ようになっています。
- 材質……DH-4 ~ DH-6……リン青銅
DHS-4 ~ DHS-6……リン青銅
DH-8 ~ DH-20……銅
DHS-8 ~ DHS-20……銅
- 処理……ニッケル下地金メッキ

● 定格電流

- DH-4-□) 2A
- DHS-4-□) 2A
- DH-6-□) 4A
- DHS-6-□) 4A
- DH-8-□) 5A
- DHS-8-□) 5A
- DH-10-□) 10A
- DHS-10-□) 10A
- DH-12-□) 13A
- DHS-12-□) 13A
- DH-14-□) 20A
- DHS-14-□) 20A
- DH-20-□) 30A
- DHS-20-□) 30A



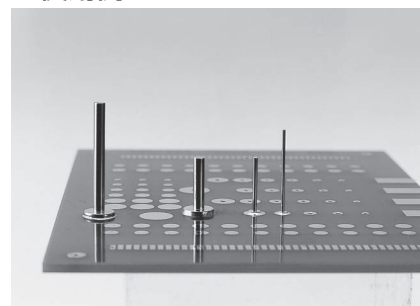
DH シリーズ



DHS シリーズ
(位置決めピン付)



■ 使用例



品番	A	B	L
DH-4-5	0.45	1.2	5
DH-4-10	0.45	1.2	10
DH-4-15	0.45	1.2	15
DH-4-20	0.45	1.2	20
DH-6-5	0.6	1.8	5
DH-6-10	0.6	1.8	10
DH-6-15	0.6	1.8	15
DH-6-20	0.6	1.8	20
DH-8-5	0.8	2.3	5
DH-8-10	0.8	2.3	10
DH-8-15	0.8	2.3	15
DH-8-20	0.8	2.3	20
DH-10-5	1.0	3.0	5
DH-10-10	1.0	3.0	10
DH-10-15	1.0	3.0	15
DH-10-20	1.0	3.0	20
DH-12-5	1.2	3.5	5
DH-12-10	1.2	3.5	10
DH-12-15	1.2	3.5	15
DH-12-20	1.2	3.5	20
DH-14-5	1.4	4.0	5
DH-14-10	1.4	4.0	10
DH-14-15	1.4	4.0	15
DH-14-20	1.4	4.0	20
DH-20-5	2.0	5.5	5
DH-20-10	2.0	5.5	10
DH-20-15	2.0	5.5	15
DH-20-20	2.0	5.5	20

品番	A	B	C	L
DHS-4-5	0.45	1.2	0.45	5
DHS-4-10	0.45	1.2	0.45	10
DHS-4-15	0.45	1.2	0.45	15
DHS-4-20	0.45	1.2	0.45	20
DHS-6-5	0.6	1.8	0.6	5
DHS-6-10	0.6	1.8	0.6	10
DHS-6-15	0.6	1.8	0.6	15
DHS-6-20	0.6	1.8	0.6	20
DHS-8-5	0.8	2.3	0.6	5
DHS-8-10	0.8	2.3	0.6	10
DHS-8-15	0.8	2.3	0.6	15
DHS-8-20	0.8	2.3	0.6	20
DHS-10-5	1.0	3.0	0.6	5
DHS-10-10	1.0	3.0	0.6	10
DHS-10-15	1.0	3.0	0.6	15
DHS-10-20	1.0	3.0	0.6	20
DHS-12-5	1.2	3.5	0.6	5
DHS-12-10	1.2	3.5	0.6	10
DHS-12-15	1.2	3.5	0.6	15
DHS-12-20	1.2	3.5	0.6	20
DHS-14-5	1.4	4.0	0.8	5
DHS-14-10	1.4	4.0	0.8	10
DHS-14-15	1.4	4.0	0.8	15
DHS-14-20	1.4	4.0	0.8	20
DHS-20-5	2.0	5.5	0.8	5
DHS-20-10	2.0	5.5	0.8	10
DHS-20-15	2.0	5.5	0.8	15
DHS-20-20	2.0	5.5	0.8	20

■ 推奨ランド

DH シリーズ		ϕA	
		DH-4	2.0
		DH-6	2.5
		DH-8	3.0
		DH-10	3.5
		DH-12	4.0
		DH-14	4.5
		DH-20	6.0

DHS シリーズ		ϕA	$\phi B^{+0.1}_{-0}$
		DHS-4	2.0 0.5
		DHS-6	2.5 0.7
		DHS-8	3.0 0.7
		DHS-10	3.5 0.7
		DHS-12	4.0 0.7
		DHS-14	4.5 0.9
		DHS-20	6.0 0.9

※クリーム半田はベタで塗って下さい。